

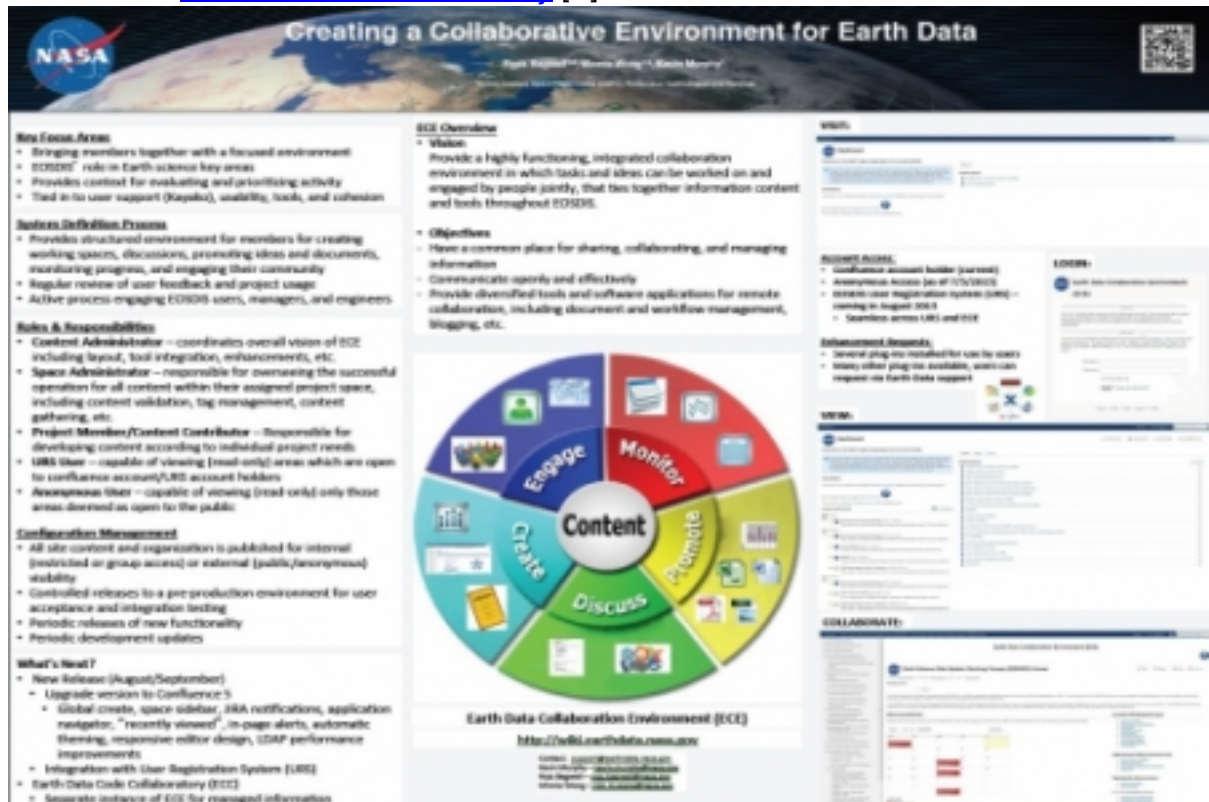
## [Creating a Collaborative Environment for Earth Data \[1\]](#)

Submitted by Ross Bagwell on Tue, 2013-07-09 08:02 **Event:** [Summer Meeting 2013 \[2\]](#)

### **Abstract:**

NASA ESDIS wanted to create a highly functional, integrated collaboration environment in which tasks and ideas could be worked with and engaged jointly by groups to tie together information and content tools. From a variety of wikis and other tools, we have created the Earth Data Collaboration Environment (ECE) for groups to have a common place for sharing and managing information and tools to communicate more openly and effectively.

**Collaboration Area:** [Earth Science Collaboratory \[3\]](#)



**Images:**

[4]

**Attachments for download:**  [ESIP poster ECE 2013\\_final.pdf \[5\]](#)

**Creative Common License:** Creative Commons Attribution 3.0 License

**Author(s):**

**Name:** [Ross Bagwell \[6\]](#)

**Organization(s):** [NASA Goddard Space Flight Center \[7\]](#), [CTS \[8\]](#)

**Name:** [Kevin Murphy \[9\]](#)

**Organization(s):** [NASA \[10\]](#)

**Name:** [Minnie Wong \[11\]](#)

**Organization(s):** [NASA ESDIS \[12\]](#)

**Email:** [min.m.wong@nasa.gov \[13\]](mailto:min.m.wong@nasa.gov)

**Keywords:** [ECE \[14\]](#)

[Collaboration \[15\]](#)

[environment \[16\]](#)

[Earth Data \[17\]](#)

**Source URL:** <http://commons.esipfed.org/node/1703>

**Links:**

- [1] <http://commons.esipfed.org/node/1703>
- [2] <http://commons.esipfed.org/taxonomy/term/651>
- [3] <http://commons.esipfed.org/collaboration-area/earth-science-collaboratory>
- [4] <http://commons.esipfed.org/sites/default/files/poster.jpg>
- [5] [http://commons.esipfed.org/sites/default/files/ESIP%20poster%20ECE%202013\\_final.pdf](http://commons.esipfed.org/sites/default/files/ESIP%20poster%20ECE%202013_final.pdf)
- [6] <http://commons.esipfed.org/node/260>
- [7] <http://commons.esipfed.org/taxonomy/term/246>
- [8] <http://commons.esipfed.org/taxonomy/term/277>
- [9] <http://commons.esipfed.org/node/1530>
- [10] <http://commons.esipfed.org/taxonomy/term/228>
- [11] <http://commons.esipfed.org/node/1702>
- [12] <http://commons.esipfed.org/taxonomy/term/1016>
- [13] <mailto:min.m.wong@nasa.gov>
- [14] <http://commons.esipfed.org/taxonomy/term/1017>
- [15] <http://commons.esipfed.org/tags/collaboration>
- [16] <http://commons.esipfed.org/taxonomy/term/1018>
- [17] <http://commons.esipfed.org/taxonomy/term/1019>