

[OPeNDAP Services - Present and Future at LP DAAC](#) [1]

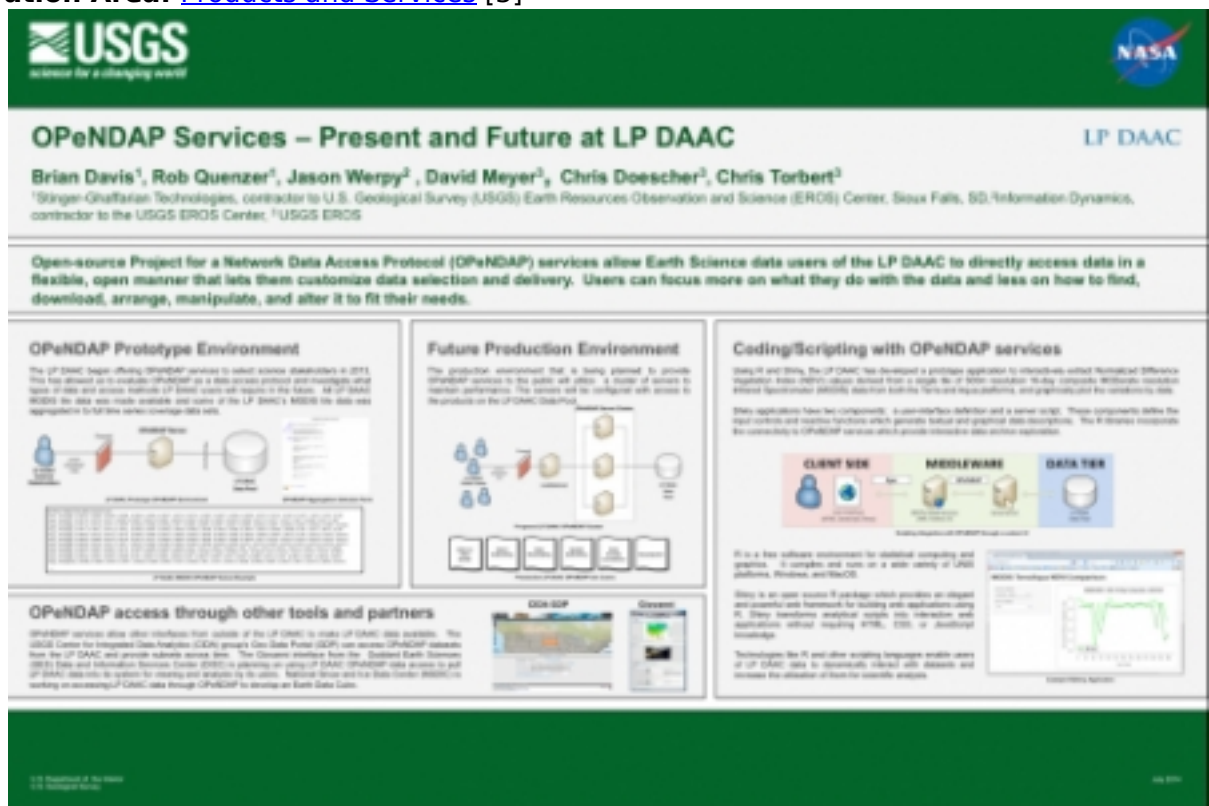
Submitted by jwerpy on Mon, 2014-06-16 10:22 **Event:** [Summer Meeting 2014](#) [2]

Abstract:

Open-source Project for a Network Data Access Protocol (OPeNDAP) allows Earth Science data users of the LP DAAC to directly access data in a flexible, open manner that allows them to customize data selection and delivery. Users can focus more on what they do with the data and less on how to find, download, arrange, manipulate, and alter it to fit their needs.

The deployment of OPeNDAP services by the LP DAAC also allows other interfaces, services, or organizations to quickly and easily integrate LP DAAC data into their systems. USGS CIDA's Global Data Portal, GES DISC - Giovanni, and NSIDC's data cube are all working on utilizing LP DAAC data through their interfaces via OPeNDAP.

Collaboration Area: [Products and Services](#) [3]



Images:

[4]

Attachments for download:  [OPeNDAP Poster.ppt](#) [5]

Author(s):

Name: [Brian Davis](#) [6]

Organization(s): [LP DAAC \(SGT\)](#) [7]

Email: bdavis@usgs.gov [8]

Name: [Robert Quenzer](#) [9]

Organization(s): [LP DAAC \(SGT\)](#) [7]

Email: rquenzer@usgs.gov [10]

Name: [Jason Werpy](#) [11]

Organization(s): [LP DAAC \(Information Dynamics\)](#) [12]

Email: jwerpy@usgs.gov [13]

Name: [David Meyer](#) [14]

OPeNDAP Services - Present and Future at LP DAAC

Published on Commons (<http://commons.esipfed.org>)

Organization(s): [US Geological Survey](#) [15]

Email: dmeyer@usgs.gov [16]

Name: [Chris Torbert](#) [17]

Organization(s): [U.S. Geological Survey](#) [18]

Email: ctorbert@usgs.gov [19]

Name: [Chris Doescher](#) [20]

Email: cdoesch@usgs.gov [21]

Keywords: [LP DAAC OPeNDAP](#) [22]

Source URL: <http://commons.esipfed.org/node/2504>

Links:

[1] <http://commons.esipfed.org/node/2504>

[2] <http://commons.esipfed.org/2014SummerMeeting>

[3] <http://commons.esipfed.org/collaboration-area/products-and-services>

[4] <http://commons.esipfed.org/sites/default/files/OPeNDAP%20Poster.jpg>

[5] http://commons.esipfed.org/sites/default/files/OPeNDAP%20Poster_0.ppt

[6] <http://commons.esipfed.org/node/2502>

[7] <http://commons.esipfed.org/taxonomy/term/1393>

[8] <mailto:bdavis@usgs.gov>

[9] <http://commons.esipfed.org/node/2503>

[10] <mailto:rquenzer@usgs.gov>

[11] <http://commons.esipfed.org/node/2498>

[12] <http://commons.esipfed.org/taxonomy/term/957>

[13] <mailto:jwerpy@usgs.gov>

[14] <http://commons.esipfed.org/node/1667>

[15] <http://commons.esipfed.org/taxonomy/term/628>

[16] <mailto:dmeyer@usgs.gov>

[17] <http://commons.esipfed.org/node/2499>

[18] <http://commons.esipfed.org/taxonomy/term/397>

[19] <mailto:ctorbert@usgs.gov>

[20] <http://commons.esipfed.org/node/1669>

[21] <mailto:cdoesch@usgs.gov>

[22] <http://commons.esipfed.org/taxonomy/term/1394>