

## [Event-Driven Cyberinfrastructure Technologies Supporting The Disaster Lifecycle](#) [1]

Submitted by manil on Mon, 2014-12-22 16:56 **Event:** [Winter Meeting 2015](#) [2]

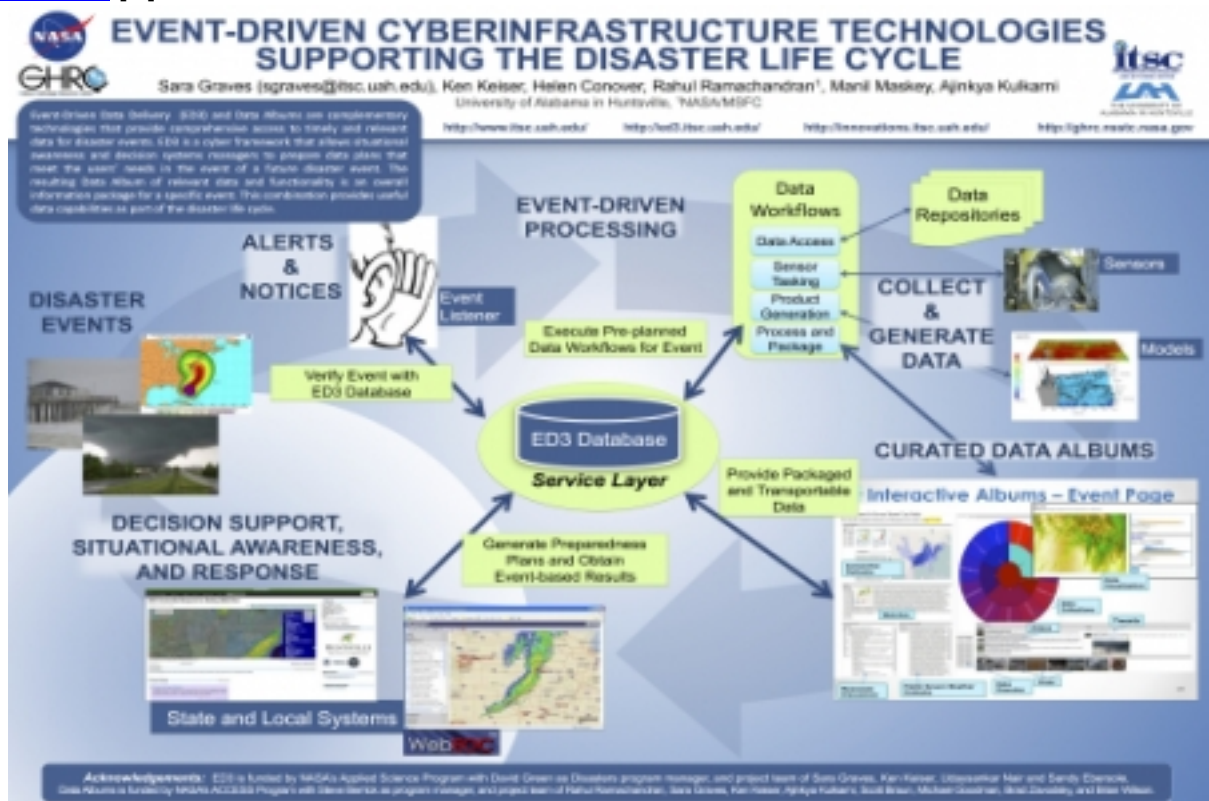
### **Abstract:**

Event-driven data delivery (ED3) is being developed to provide data preparedness through the automation data access and processing for decision support as the result of disaster events.

Through a NASA Applied Science award, the Information Technology and Systems Center and Atmospheric Science Department, both at the University of Alabama in Huntsville (UAH), and the Geological Survey of Alabama, are collaborating to refine and apply the ED3 functionality for data response to disasters. The team is working closely with decision support systems, such as the SERVIR project and state and regional agencies and programs in Alabama, to help define the capabilities that will best suit the end users for a variety of disaster events. This poster depicts Event Listener and Subscription Management components of ED3 and shows how they can be used to drive the generation of Data Albums for disaster event occurrences. The ED3 project will demonstrate the reusability of this technology for other disaster events and in support of multiple decision support systems and end users.

**Collaboration Area:** [Decisions](#) [3]

[Science Software](#) [4]



**Images:**

[5]

**Attachments for download:**  [ESIP-ED3-Eventdriven-poster.jpg](#) [6]

**Author(s):**

**Name:** [Sara Graves](#) [7]

**Organization(s):** [University of Alabama in Huntsville](#) [8]

**Email:** [sgraves@itsc.uah.edu](mailto:sgraves@itsc.uah.edu) [9]

**Name:** [Ken Keiser](#) [10]

**Organization(s):** [University of Alabama in Huntsville](#) [8]

**Email:** [keiserk@uah.edu](mailto:keiserk@uah.edu) [11]

**Name:** [Helen Conover](#) [12]  
**Organization(s):** [University of Alabama in Huntsville](#) [8]

**Name:** [Rahul Ramachandran](#) [13]  
**Organization(s):** [NASA/MSFC](#) [14]  
**Email:** [mail@rramachandran.com](mailto:mail@rramachandran.com) [15]

**Name:** [Manil Maskey](#) [16]  
**Organization(s):** [University of Alabama in Huntsville](#) [8]

**Name:** [Ajinkya Kulkarni](#) [17]  
**Organization(s):** [University of Alabama in Huntsville](#) [8]  
**Email:** [ajinkya@ajinkyakulkarni.com](mailto:ajinkya@ajinkyakulkarni.com) [18]

**Keywords:** [Disaster](#) [19]  
[Disaster Response](#) [20]  
[Event-Driven](#) [21]

**Source URL:** <http://commons.esipfed.org/node/7788>

## Links:

- [1] <http://commons.esipfed.org/node/7788>
- [2] <http://commons.esipfed.org/2015WinterMeeting>
- [3] <http://commons.esipfed.org/collaboration-area/decisions>
- [4] <http://commons.esipfed.org/taxonomy/term/1310>
- [5] [http://commons.esipfed.org/sites/default/files/ESIP-ED3-Eventdriven-poster\\_2.jpg](http://commons.esipfed.org/sites/default/files/ESIP-ED3-Eventdriven-poster_2.jpg)
- [6] <http://commons.esipfed.org/sites/default/files/ESIP-ED3-Eventdriven-poster.jpg>
- [7] <http://commons.esipfed.org/node/1052>
- [8] <http://commons.esipfed.org/taxonomy/term/186>
- [9] <mailto:sgraves@itsc.uah.edu>
- [10] <http://commons.esipfed.org/node/1051>
- [11] <mailto:keiserk@uah.edu>
- [12] <http://commons.esipfed.org/node/300>
- [13] <http://commons.esipfed.org/node/1904>
- [14] <http://commons.esipfed.org/taxonomy/term/1156>
- [15] <mailto:mail@rramachandran.com>
- [16] <http://commons.esipfed.org/node/301>
- [17] <http://commons.esipfed.org/node/204>
- [18] <mailto:ajinkya@ajinkyakulkarni.com>
- [19] <http://commons.esipfed.org/taxonomy/term/588>
- [20] <http://commons.esipfed.org/taxonomy/term/946>
- [21] <http://commons.esipfed.org/taxonomy/term/1161>