

Enriching Earthdata by Improving Content Curation

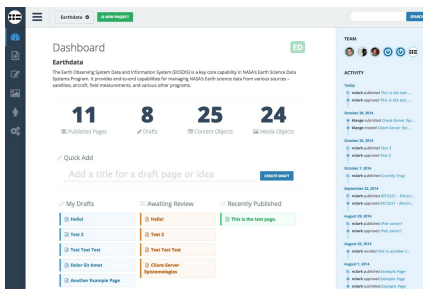
Ross Bagwell^{1,2}, Minnie Wong^{1,2}, Kevin Murphy¹

¹NASA Goddard Space Flight Center (GSFC), ²Columbus Technologies and Services

IN31B-3721

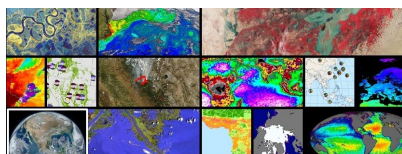
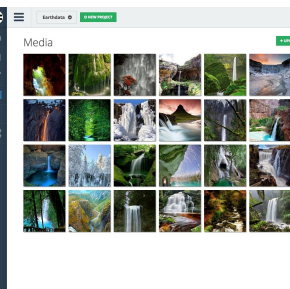
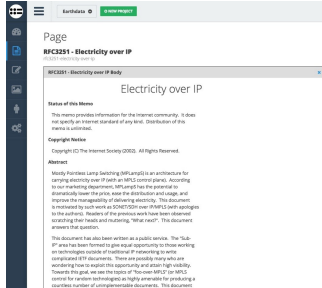
Improving Content Input

Using a Git repository and the Atlassian software package Bamboo (a continuous integration and build server), content for Earthdata will be created and edited in an environment currently referred to as “Conduit”. The content will undergo a review process before being committed to Git and deployed via Bamboo. Conduit is currently in development, but once completed it will be an HTML tool where content managers can create and edit in a WYSIWYG environment:



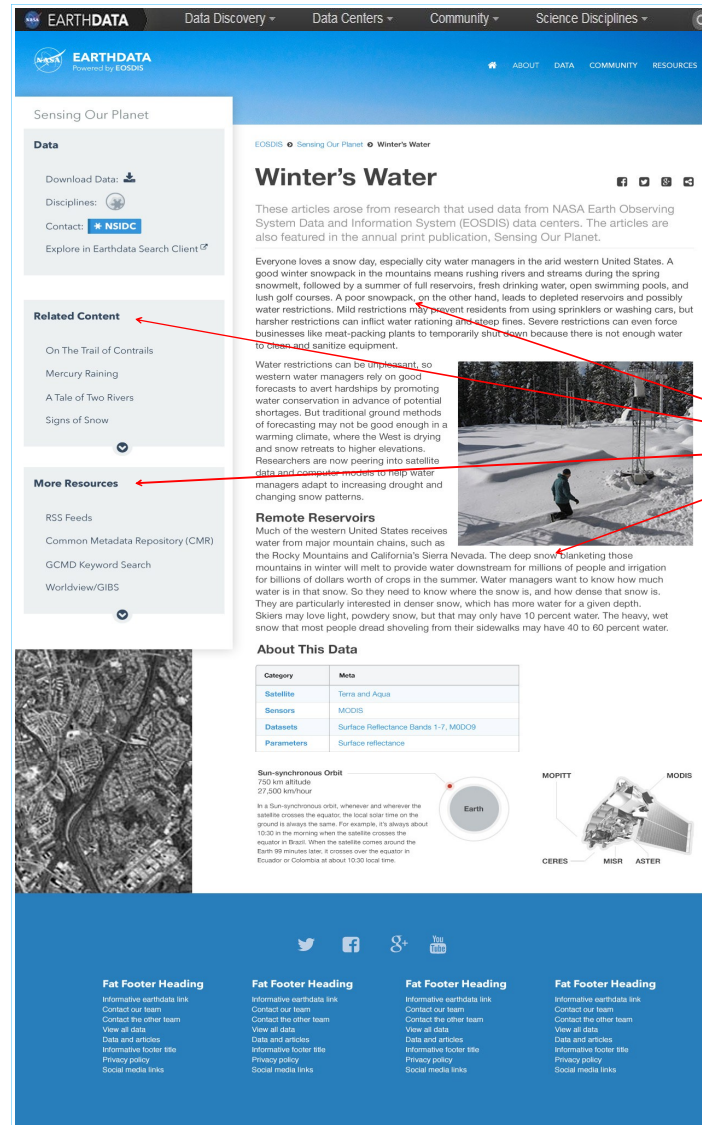
Conduit will provide a dashboard to track Earthdata content objects and activity among the team to facilitate easier creation and publication of articles and media within Earthdata.

Articles will be created in page templates that will include version history and tracking, page previews before publication, and other useful tools, such as the ability to highlight keywords.



Media will be more manageable and more integrated within the editorial environment with the use of media libraries.

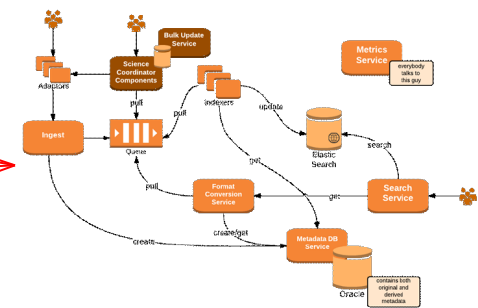
Connect with us:



Incorporating New Applications To Drive Content

The Common Metadata Repository (CMR) – a high-performance, high-quality metadata engine to manage the evolution of EOSDIS metadata – will be leveraged to use keywords or topics throughout the various data sources (such as the Global Imagery Browse Services/GIBS, data recipes, tutorials, user resources, posters, etc) to provide related content or more resources based on user interest, search results, or highlighted tags.

Common Metadata Repository (CMR)



Embedded content will include images, video, and charts, etc that enhance the information with comprehensive multimedia and reference resources for a more refined user experience.

Curating Content into Sources and Categories

| SOURCES | Missions & Projects | DAACs/ SIPS/SCFs | Interagency projects | EOSDIS components | Sea Level Change Portal | Comm. Data, Sys | Workshops/ Meetings | Partner Agencies | Web/ publications |
|---------------------------------|-------------------------------------|-------------------------------------|--|--|---|---|--|--|--|
| CATEGORIES | EOSDIS | Jenette | | Brown Orling | Rosa | Mattias | Rama | Jennifer | Rosal/Jennifer |
| Stories/ Articles | - EOSDIS mgmt - Mission Project Mgr | - DAAC User Services - Science team | - Content mgmt team - EOSDIS Comm team | - Steve Orling - WIS Range - Content mgmt team | - LANCE (Dane) - GIBS (Mike C) - WIS Range (P) - CMR (Rama) - Earthdata Search Client (D) | - Sea Level Change authors - ACCESS Project Mgr | - Content mgmt team - EOSDIS Comm team | - Content mgmt team - EOSDIS Comm team | - Content mgmt team - EOSDIS Comm team |
| Images | - EOSDIS mgmt - Mission Project Mgr | - DAAC User Services - Science team | - Content mgmt team - EOSDIS Comm team | - Steve Orling - WIS Range - Content mgmt team | - LANCE, GIBS, WIS Range, CMR, Earthdata Search | - DAACs - Sea Level Change authors - ACCESS Project Mgr | - Content mgmt team - EOSDIS Comm team | - Content mgmt team - EOSDIS Comm team | - Content mgmt team - EOSDIS Comm team |
| News | - EOSDIS mgmt - Mission Project Mgr | - DAAC User Services - Science team | - Content mgmt team - EOSDIS Comm team | - Steve Orling - WIS Range - Content mgmt team | - LANCE, GIBS, WIS Range, CMR, Earthdata Search | - Sea Level Change authors - ACCESS Project Mgr | - Content mgmt team - EOSDIS Comm team | - Content mgmt team - EOSDIS Comm team | - Content mgmt team - EOSDIS Comm team |
| Tutorials/ Recipes | - EOSDIS mgmt - Mission Project Mgr | - DAAC User Services - Science team | - Content mgmt team - EOSDIS Comm team | - Steve Orling - WIS Range - Content mgmt team | - LANCE, GIBS, WIS Range, CMR, Earthdata Search | - Sea Level Change authors - ACCESS Project Mgr | - Content mgmt team - EOSDIS Comm team | - Content mgmt team - EOSDIS Comm team | - Content mgmt team - EOSDIS Comm team |
| Videos/ Animations | - EOSDIS mgmt - Mission Project Mgr | - DAAC User Services - Science team | - Content mgmt team - EOSDIS Comm team | - Steve Orling - WIS Range - Content mgmt team | - LANCE, GIBS, WIS Range, CMR, Earthdata Search | - Sea Level Change authors - ACCESS Project Mgr | - Content mgmt team - EOSDIS Comm team | - Content mgmt team - EOSDIS Comm team | - Content mgmt team - EOSDIS Comm team |
| Background/ context information | - EOSDIS mgmt - Mission Project Mgr | - DAAC User Services - Science team | - Content mgmt team - EOSDIS Comm team | - Steve Orling - WIS Range - Content mgmt team | - LANCE, GIBS, WIS Range, CMR, Earthdata Search | - Sea Level Change authors - ACCESS Project Mgr | - Content mgmt team - EOSDIS Comm team | - Content mgmt team - EOSDIS Comm team | - Content mgmt team - EOSDIS Comm team |

Curating the content into more manageable sources and categories will be key for providing the most valuable Earth science content. By integrating the use of Digital Object Identifiers (DOIs) and Directory Interchange Format (DIF) Earthdata will have the ability to present the user with content that is most important to their interest and to allow the user to quickly and efficiently access the data and information that they are looking for.

Earthdata Content Management Team

Kevin Murphy – kevin.j.murphy@nasa.gov

Ross Bagwell – ross.bagwell@nasa.gov

Minnie Wong – min.m.wong@nasa.gov

<https://earthdata.nasa.gov>



This document was created with Win2PDF available at <http://www.win2pdf.com>.
The unregistered version of Win2PDF is for evaluation or non-commercial use only.
This page will not be added after purchasing Win2PDF.