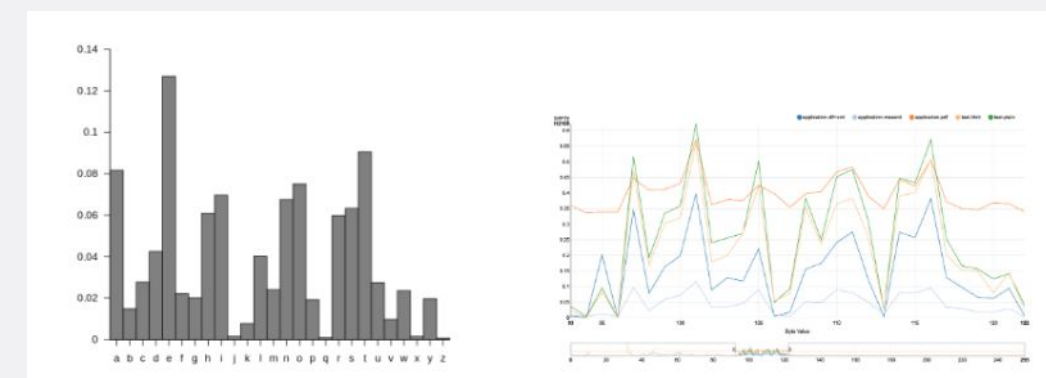


## Motivation



Byte frequency analysis of a sub-sample of documents from polar repositories (corpus) indicates that nearly every filetype has some text stored in it, as part of the file contents or metadata

**Documents contain rich text:**  
 The mean ratio of size of extracted text from documents by the size of the document is 0.47. 48MB of the 13.51GB corpus is metadata, On average 12% of every document is textual metadata.

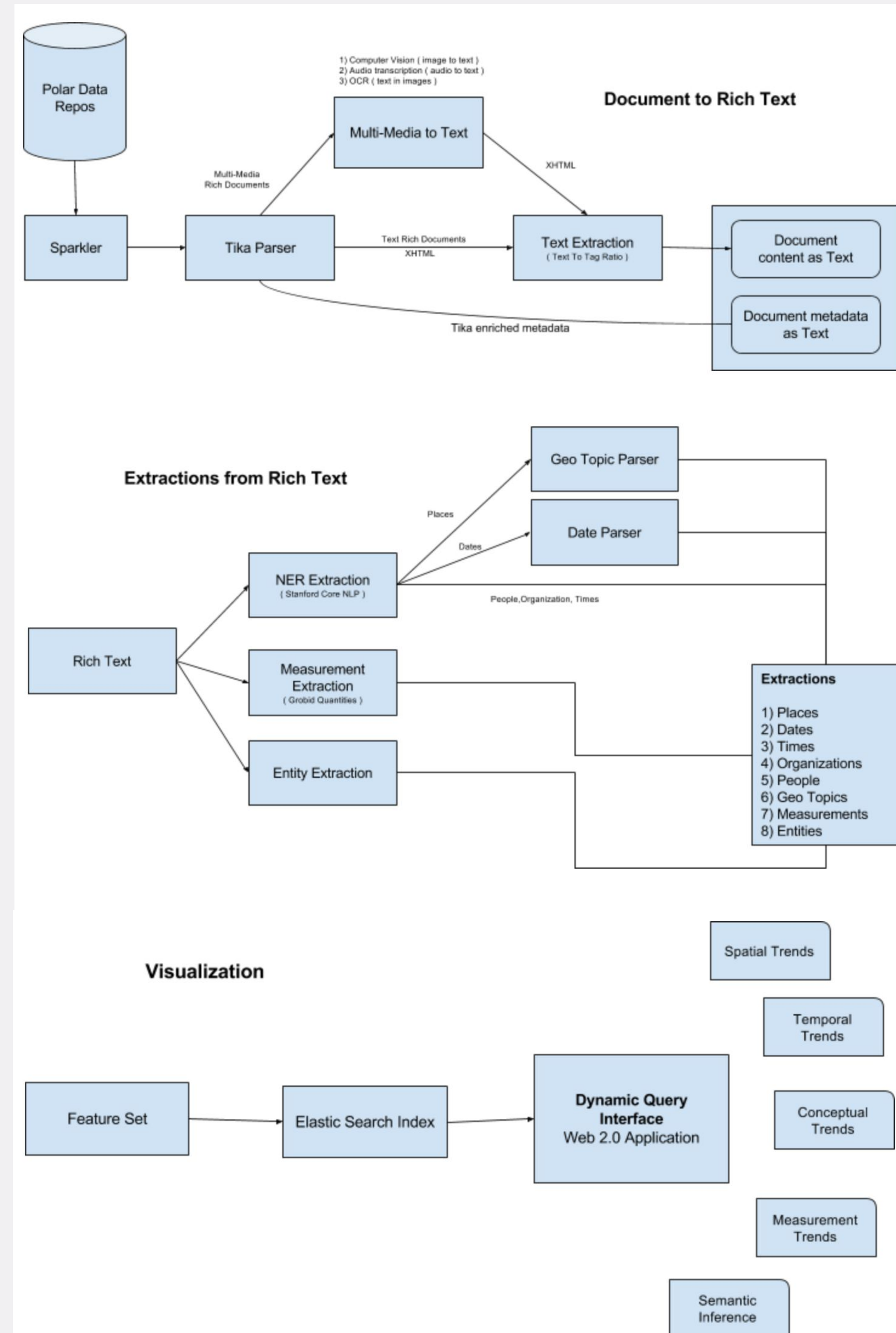
**Documents contain rich spatial data:**  
 400K locations extracted from the corpus. 10 locations extracted on average per document, 4 unique locations per document.

**Documents contain rich temporal data:**  
 450K dates extracted from the corpus. 11 dates per document.

**Conceptual Richness:**  
 833k entities extracted from the corpus. 21 entities extracted per document.

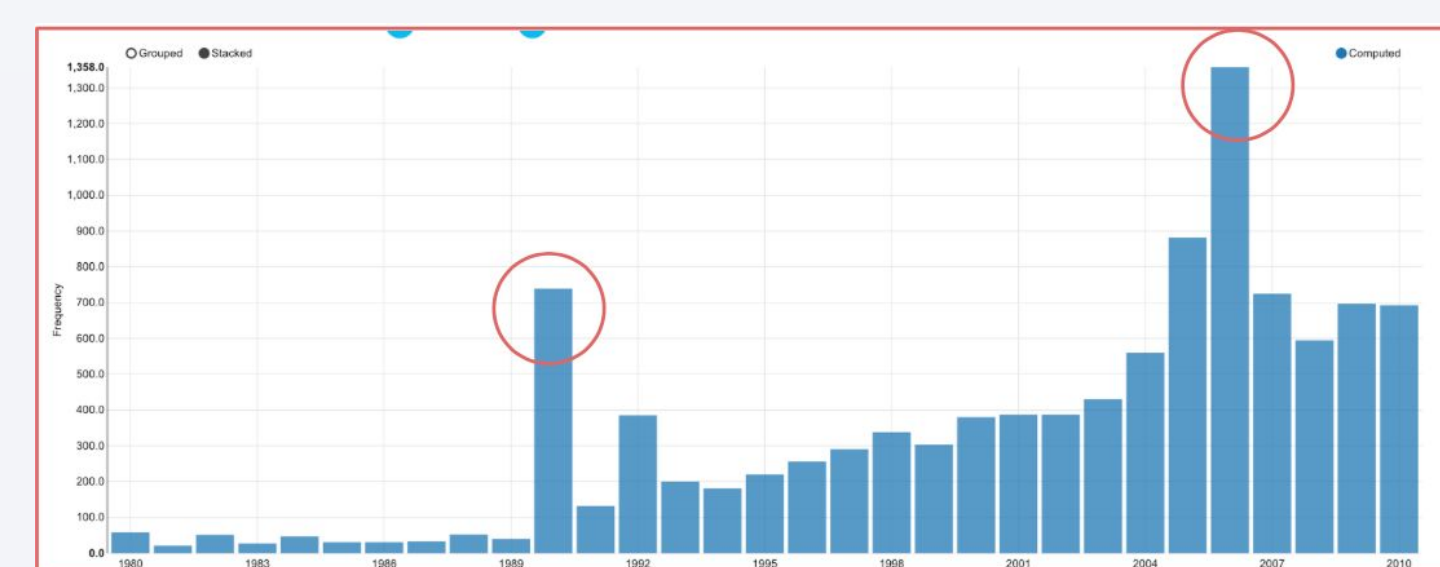
**Measurement Richness:**  
 Over unique 150 unit of measures extracted from the corpus.

## Architecture - Extraction Pipeline



## Polar Deep Insights

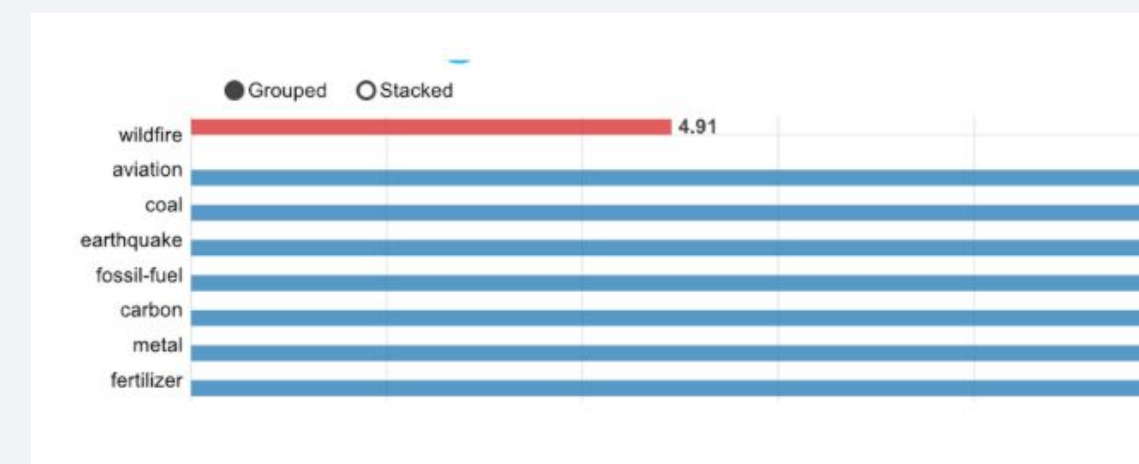
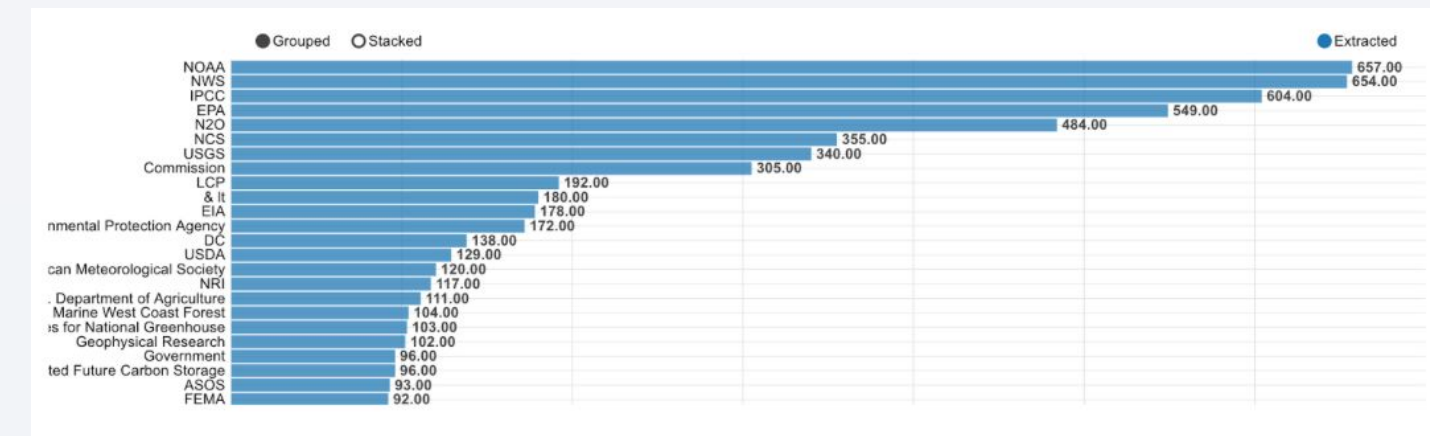
### Wildfire



**Temporal trends of Wildfires:**  
 [NBC News] Record number of wildfires in 2006. [WILDFIRE ACTIVITY STATISTICS] First detailed study about wildfires came out in 1990.

**What are the major organizations involved with wildfire study?**

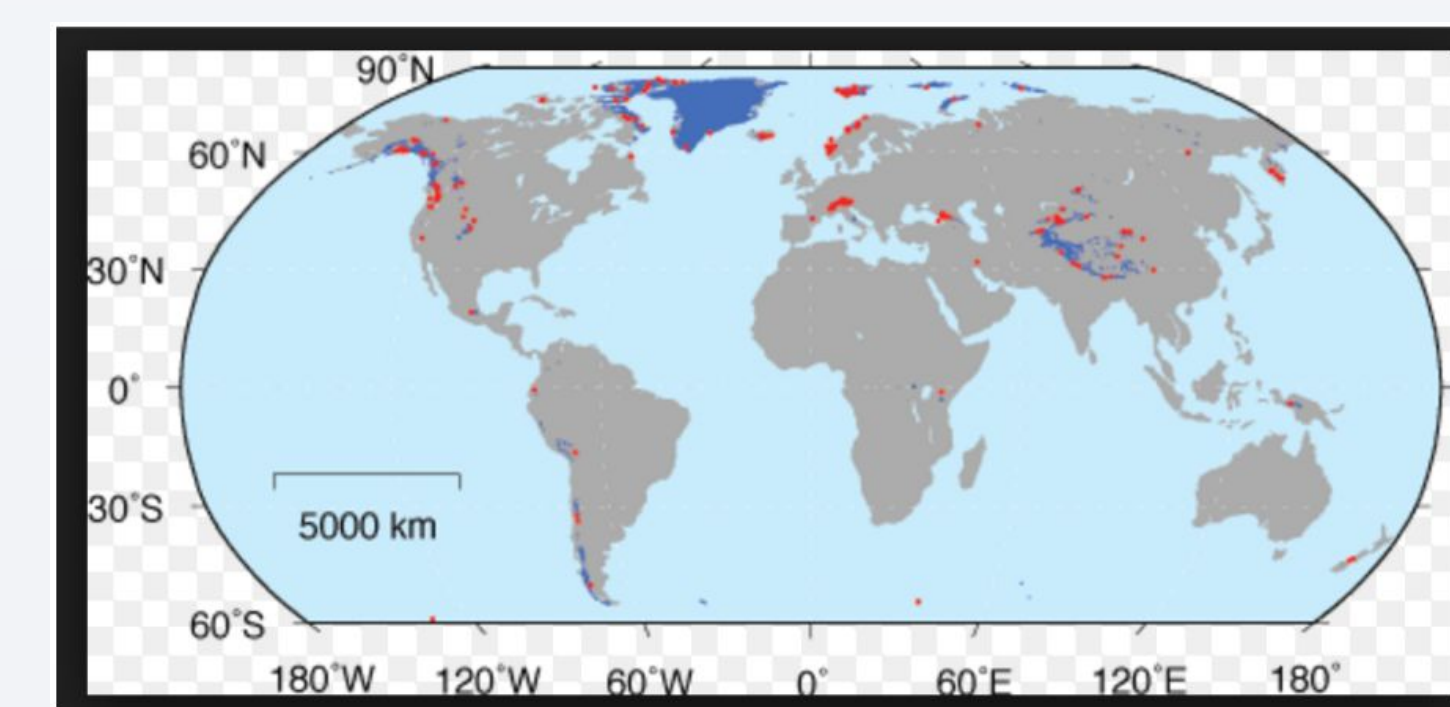
NOAA, NWS, IPCC, EPA



**What are the concepts which co-occur with wildfire?**  
**Aviation:** use of aircraft and other aerial resources to combat wildfires  
**Fertilizer:** Ash from wildfires become fertilizer for plants

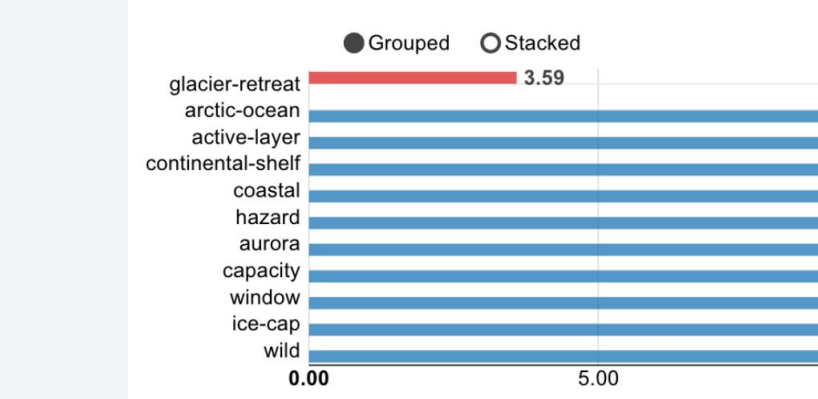
### Glacier Retreat

**Where is glacier retreat prominent?**  
 Coastal regions of Alaska, Greenland, Northern Europe

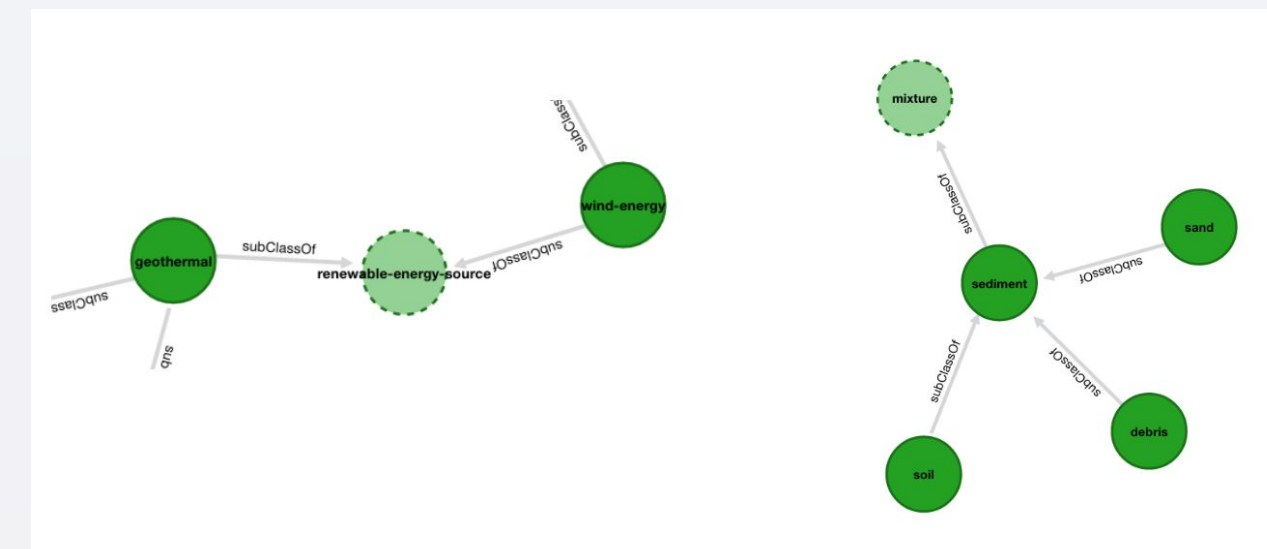


GLIMS: Global Glacier Recession

**What are the concepts which co-occur with glacier retreat?**  
 Arctic Ocean, Continental shelf, Coastal, Hazard, Aurora ice-cap



### Sea level Rise

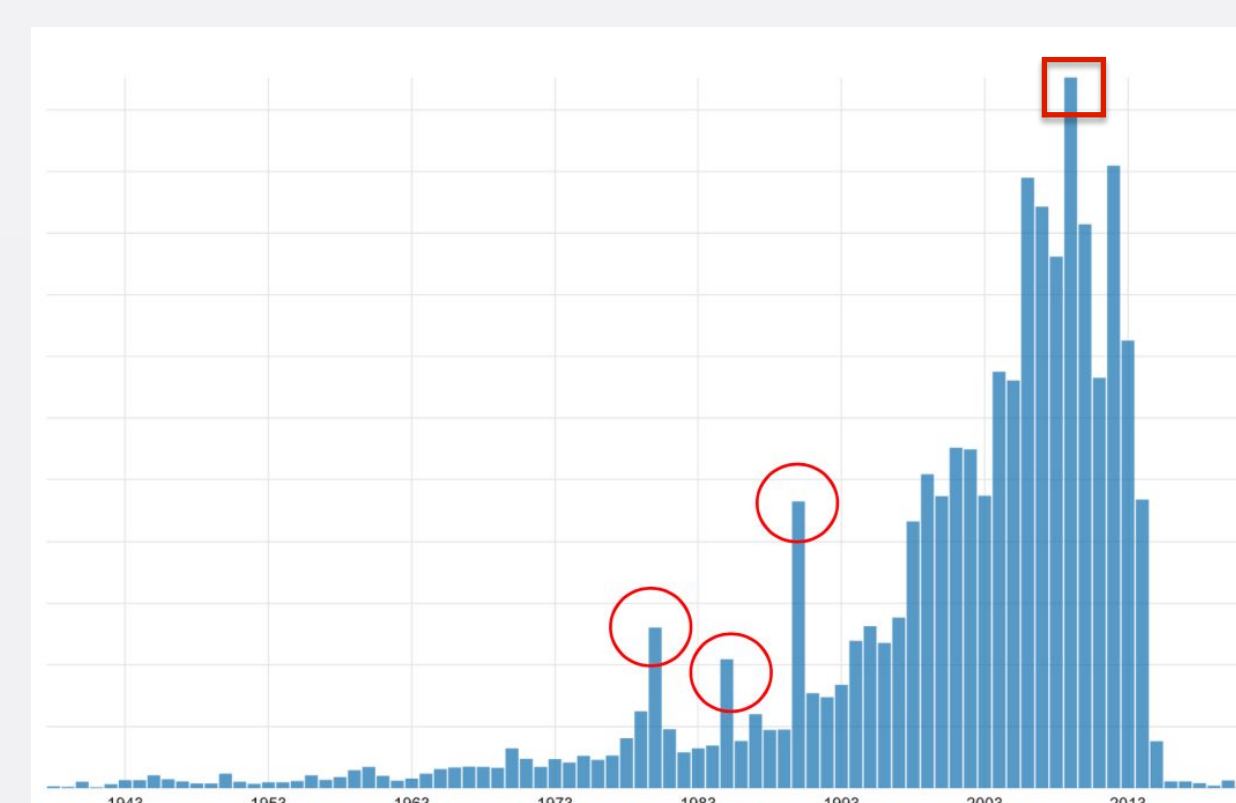


**Documents talking about sea level rise, talk about the following broad concepts:**  
 (Semantic Inference)

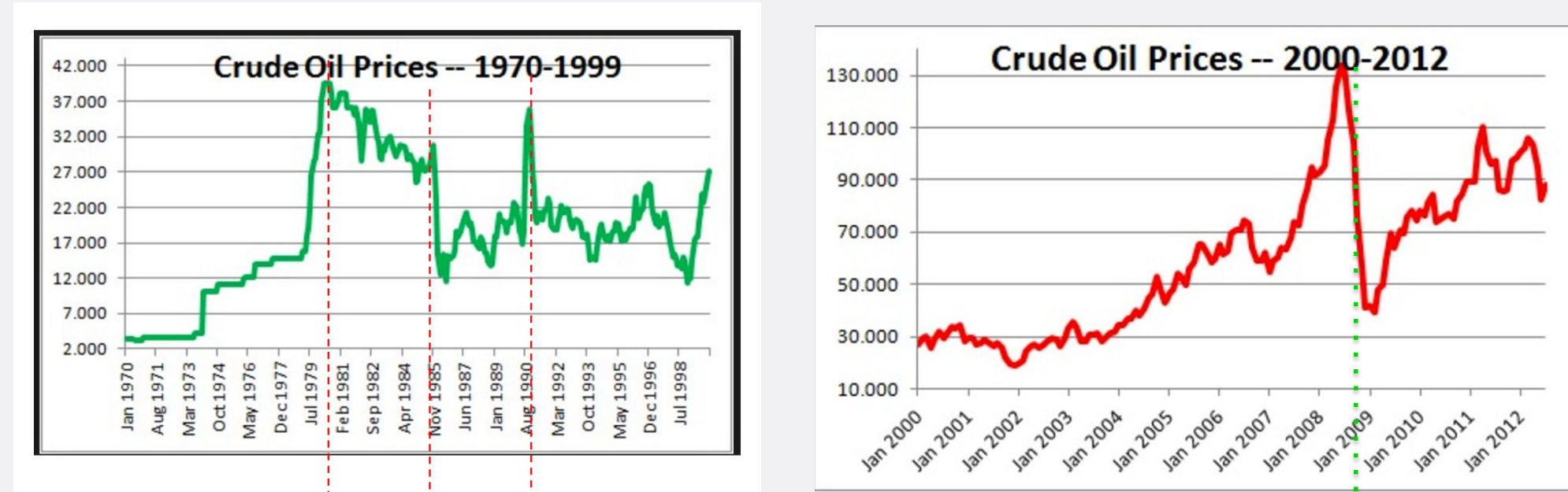
1. biological-phenomena
2. human-activity
3. decision-activity
4. sediment
5. ecological-dynamics
6. system-state-change
7. landform
8. realm-configuration
9. biological-role
10. land-use

**What are the related concepts which co-occur with sea level rise?**  
 Sedimentation, Renewable Energy Source

### Crude oil Prices

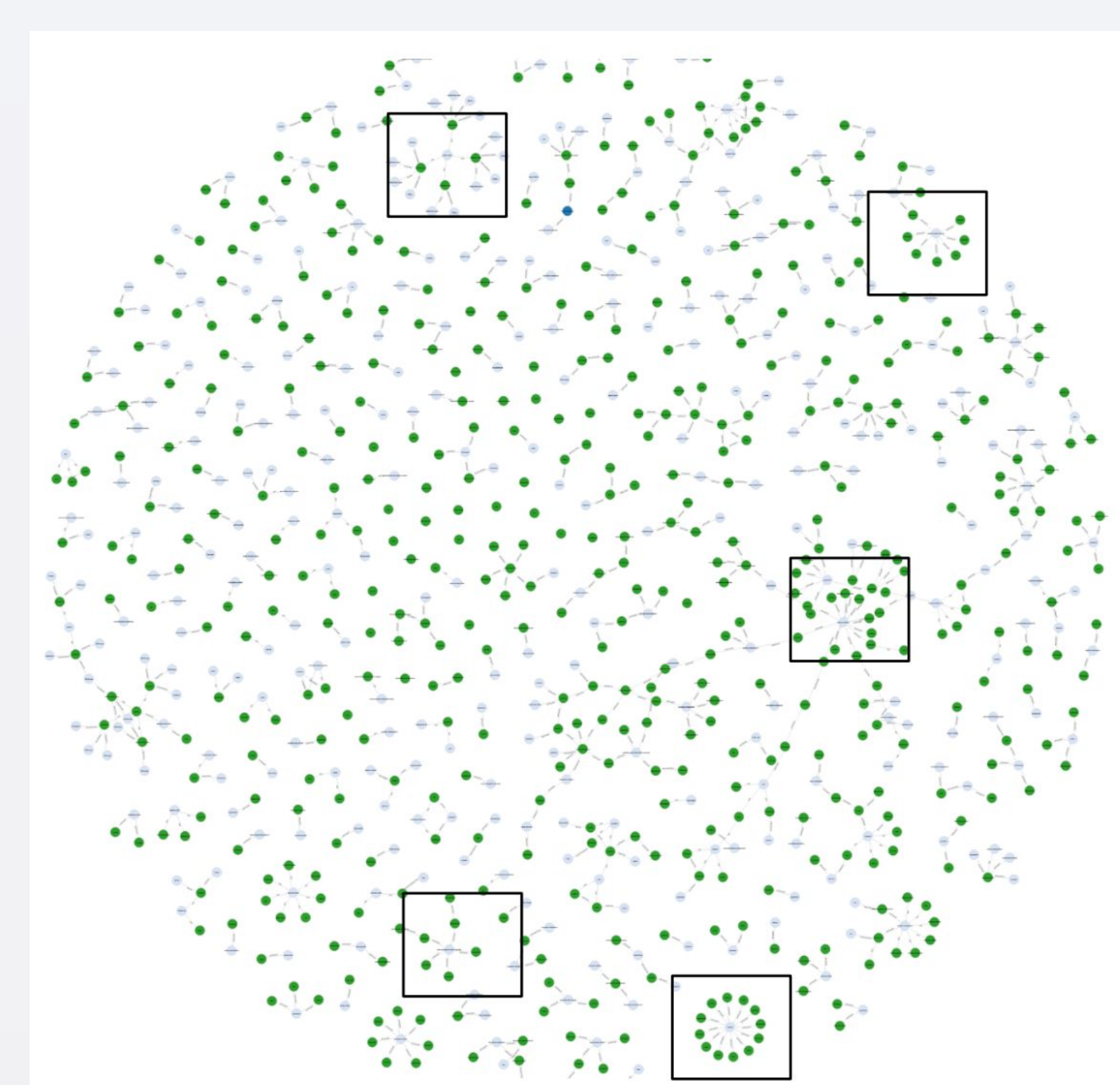


Steep price fluctuations in crude oils prices in 1980, 1985, 1990 and 2008 marked by distinct increase in document discussions



An Oil Price Primer

### Climate change indicators



**Which are some of the indicators of climate change?**  
 (Semantic Inference)

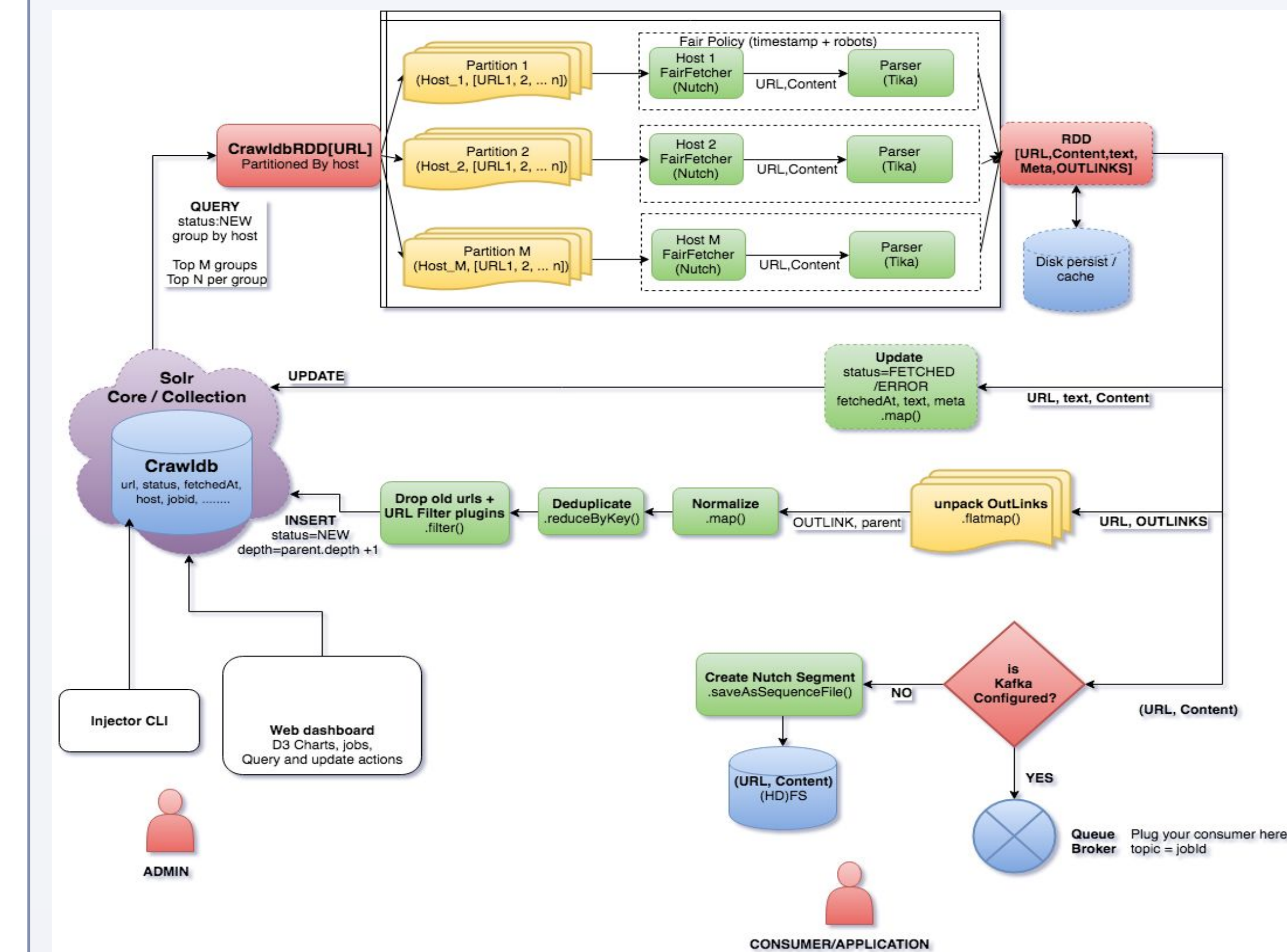
- animal
- marine-animal
- organic-compound
- earth-oscillation
- system-state-change
- element
- Vegetation
- Human-activity
- environmental-control-strategy

**Semantic Inference:**

In all the documents which talk about climate change, we compute a subset of the knowledge graph with concepts within these documents. We then locate the concepts in the subgraph with the highest in-degree indicating causal inference.

## Sparkler

### Crawl Cycle



### Banana Dashboard



## Future Work

- We look to scale up our infrastructure to process larger data repositories faster.
- The SWEET ontology is generic earth sciences. We look to Investigate polar specific ontologies to gain specific insights about the cryosphere.
- We look study and derive insights about current polar research trends.
  - ★ Spatial distribution of various types of ice/snow around the world
  - ★ Temporal trends impacting snow/ice
  - ★ Impact of Drought, population, temperature increase, natural hazards, public affairs, urban heat wave, dumping of chemicals etc. on the cryosphere.
- ★ Rate of glacier recession
- ★ Trends pertaining to Rotten Ice
- ★ Quantify sea water intrusion, Sea level rise and Inundation
- ★ Role of Heat Transport on Arctic Ice
- ★ Investigate Seasonal Changes to the cryosphere
- ★ Global Snow Estimation

## References

Polar deep insights: <http://polar.usc.edu/polar-deep-insights>

