



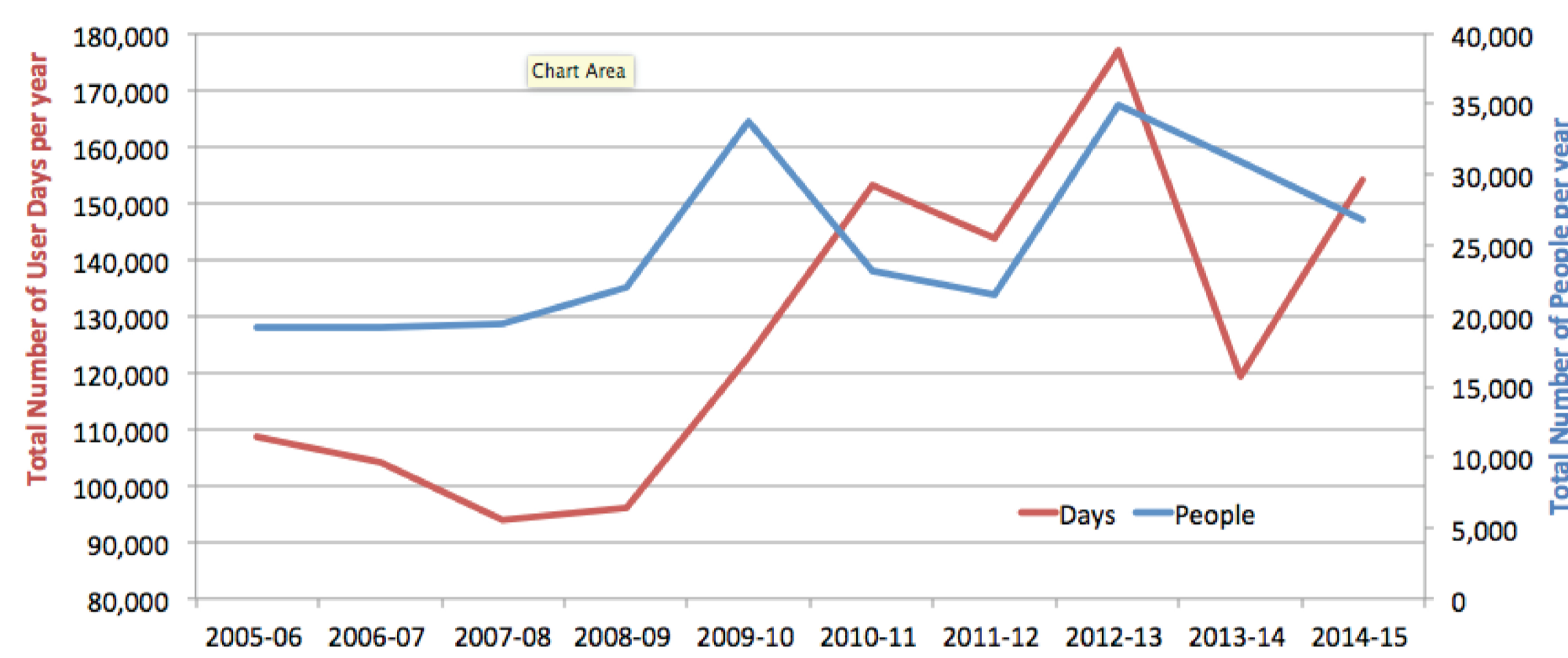
UC NRS USE STATISTICS:



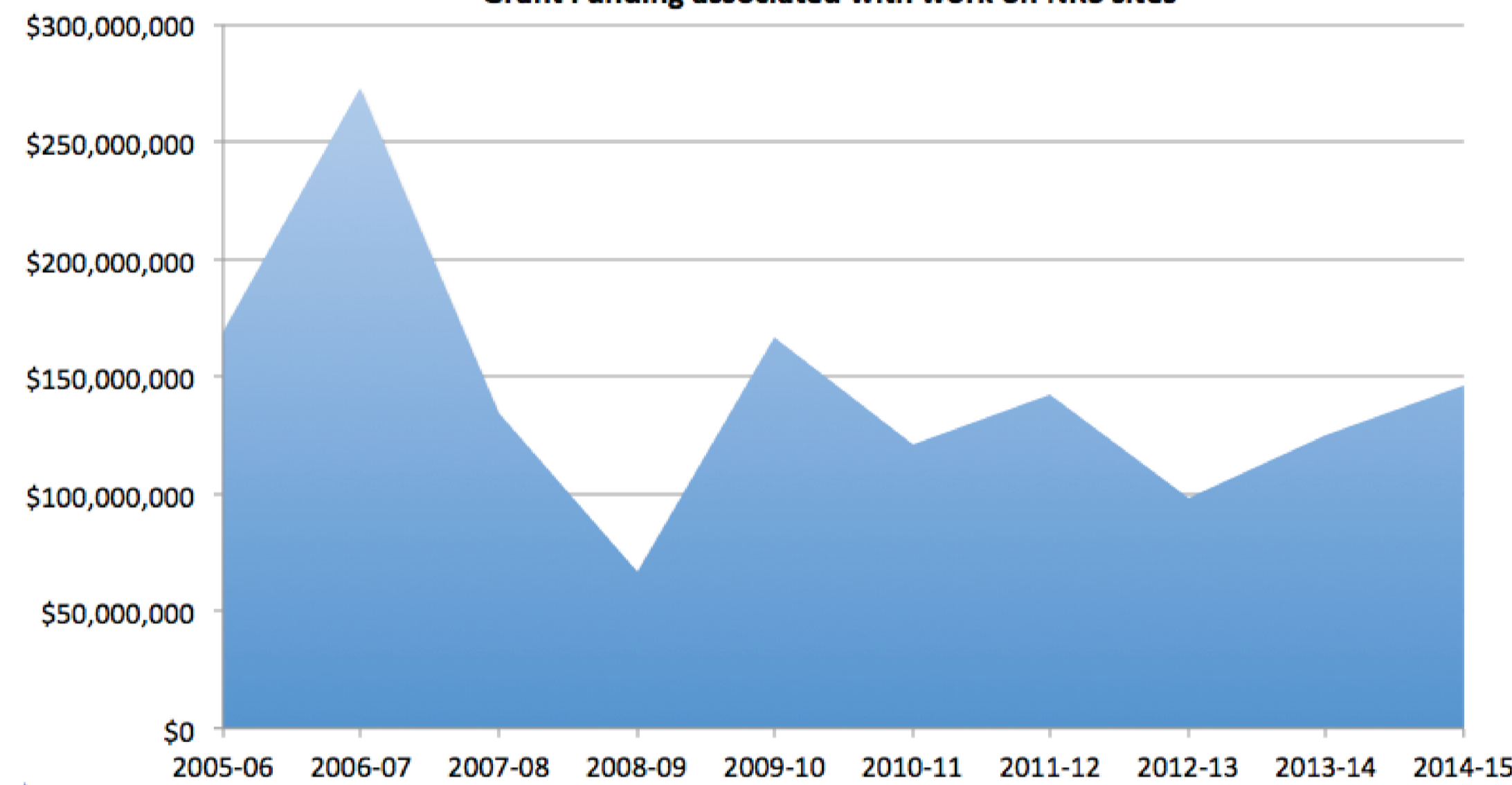
On average:
26,811 people each year
149,417 days each year

In the last 5 years:
> 7,000 Research Applications
> 4,500 Class Use Applications

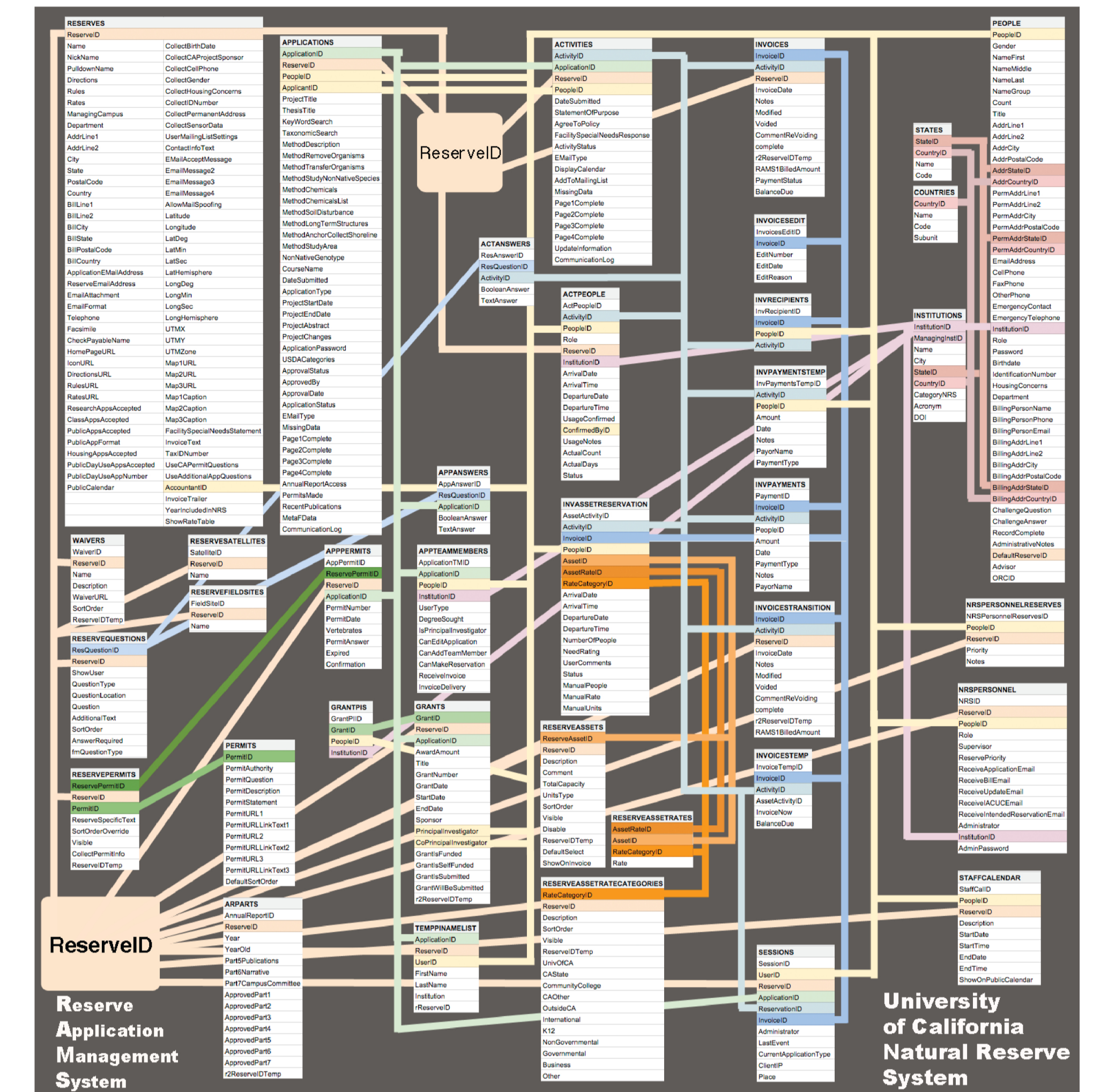
2005 - 2015 Annual Use Statistics for Total Number of People and Days



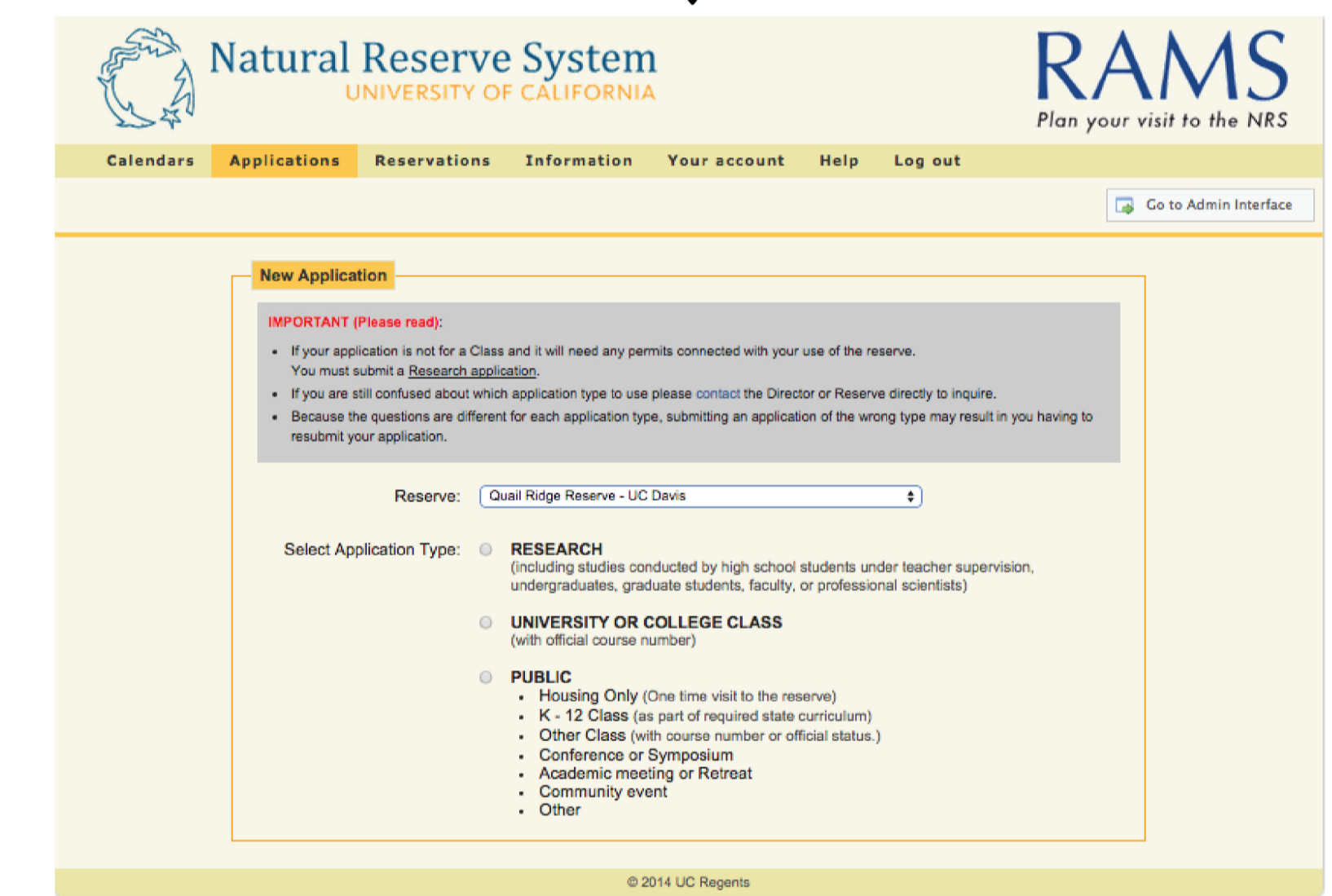
Grant Funding associated with work on NRS sites



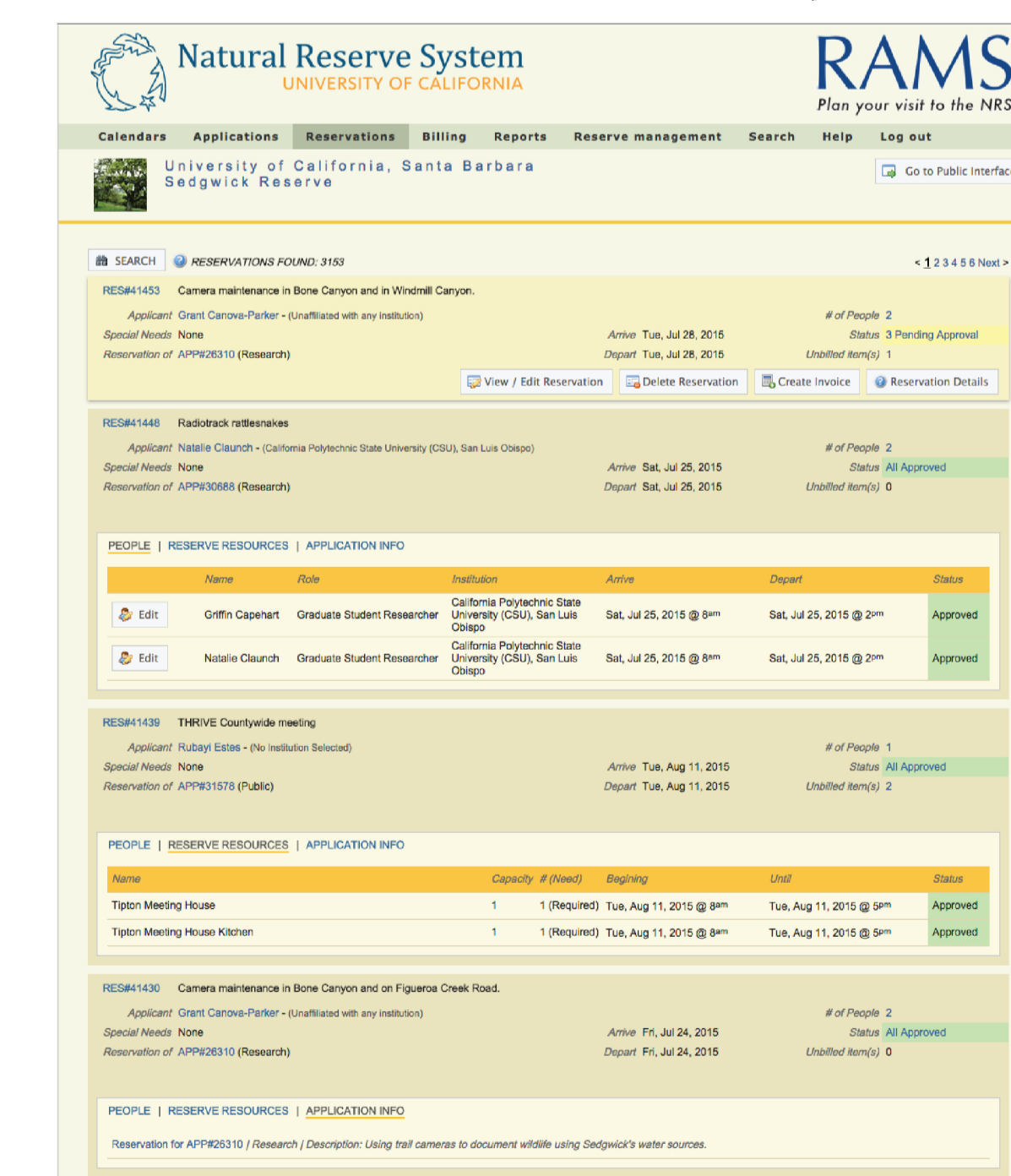
RAMS MYSQL DATABASE SCHEMA



LASSO SCRIPT INTERFACE



GUI WEB INTERFACE



RESERVATION MANAGEMENT

ANNUAL USE STATISTICS

RAMS PURPOSE:

- Collect data on the use of reserves
- Group size
- Purpose of visit
- Details of research plan & impacts, class itinerary, public use
- Make management decisions about research, class and public use
- A valuable tool for metadata collection and tracking metrics of use
- Function as a single network with uniform interface, use guidelines and procedures
- Allow easy collaboration between researchers
- Export metrics and use data for grant proposals, administration

NATIONAL ACADEMIES OF SCIENCES:

ENHANCING THE VALUE AND SUSTAINABILITY OF FIELD STATIONS AND MARINE LABORATORIES IN THE 21ST CENTURY

NEED:

Document use and collect metrics to address performance and successes
Generate reports for administration, private sector, and state/federal agencies

RECOMMENDATIONS:

Develop common metrics to measure performance and impacts
Institutions need to support documentation of field stations contribution to nations research and education enterprise
Funding is needed to support these efforts

UCNRS RAMS

RAMS was singled out as an outstanding existing example that could achieve these goals
Applications generate core meta data about research and projects on reserves
Reservations generate core metric data about use; number of people, period of use, facilities needed



Please contact the University of California Natural Reserve System
1111 Franklin Street, Oakland, CA 94607-5200
<http://nrs.ucop.edu>
Kevin Browne infomgr@ucnrs.org
Manuel Minwary datamgr@ucnrs.org
Dr. Becca Fenwick beccafenwick@gmail.com