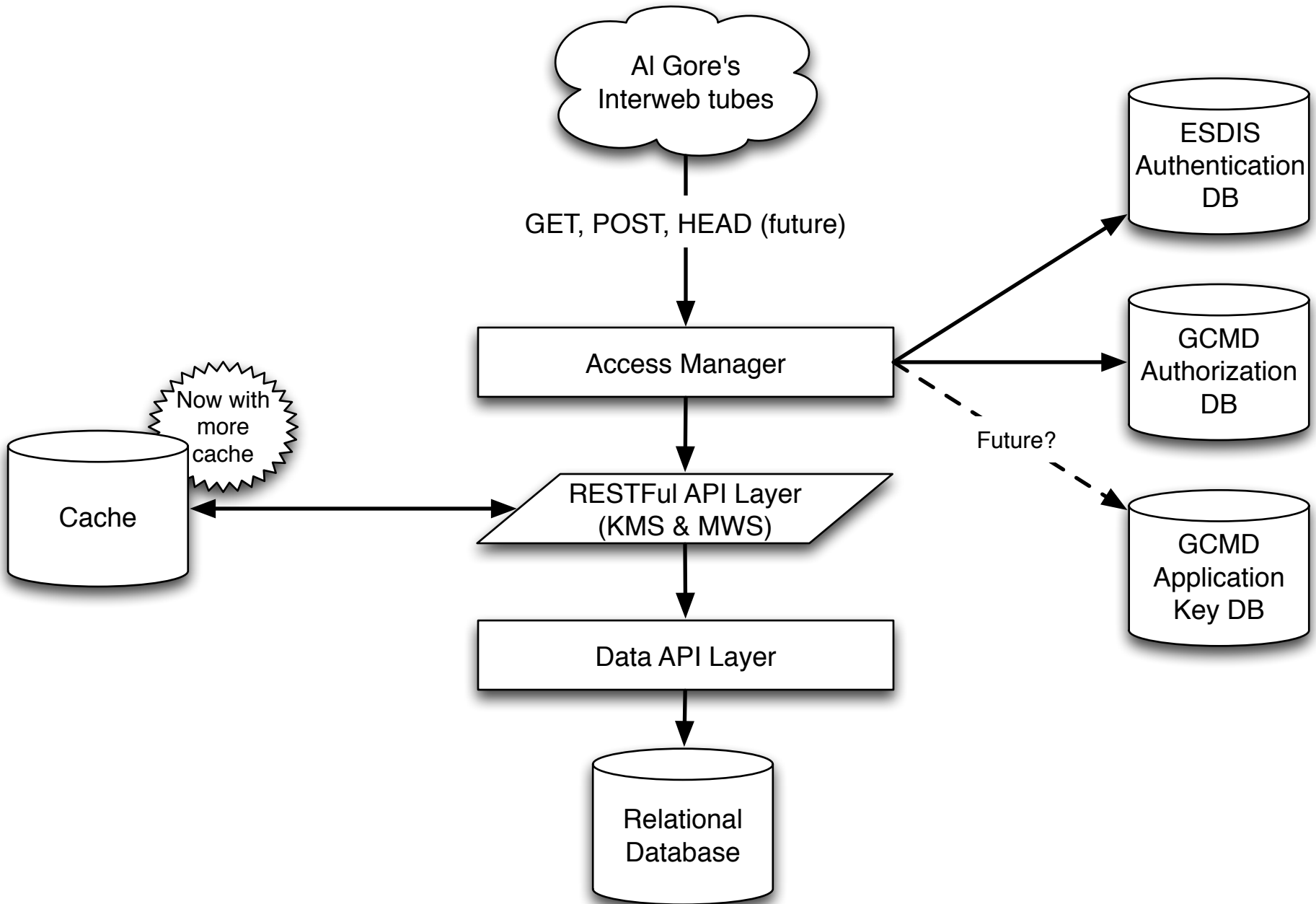


Accessing Metadata with GCMD Interfaces

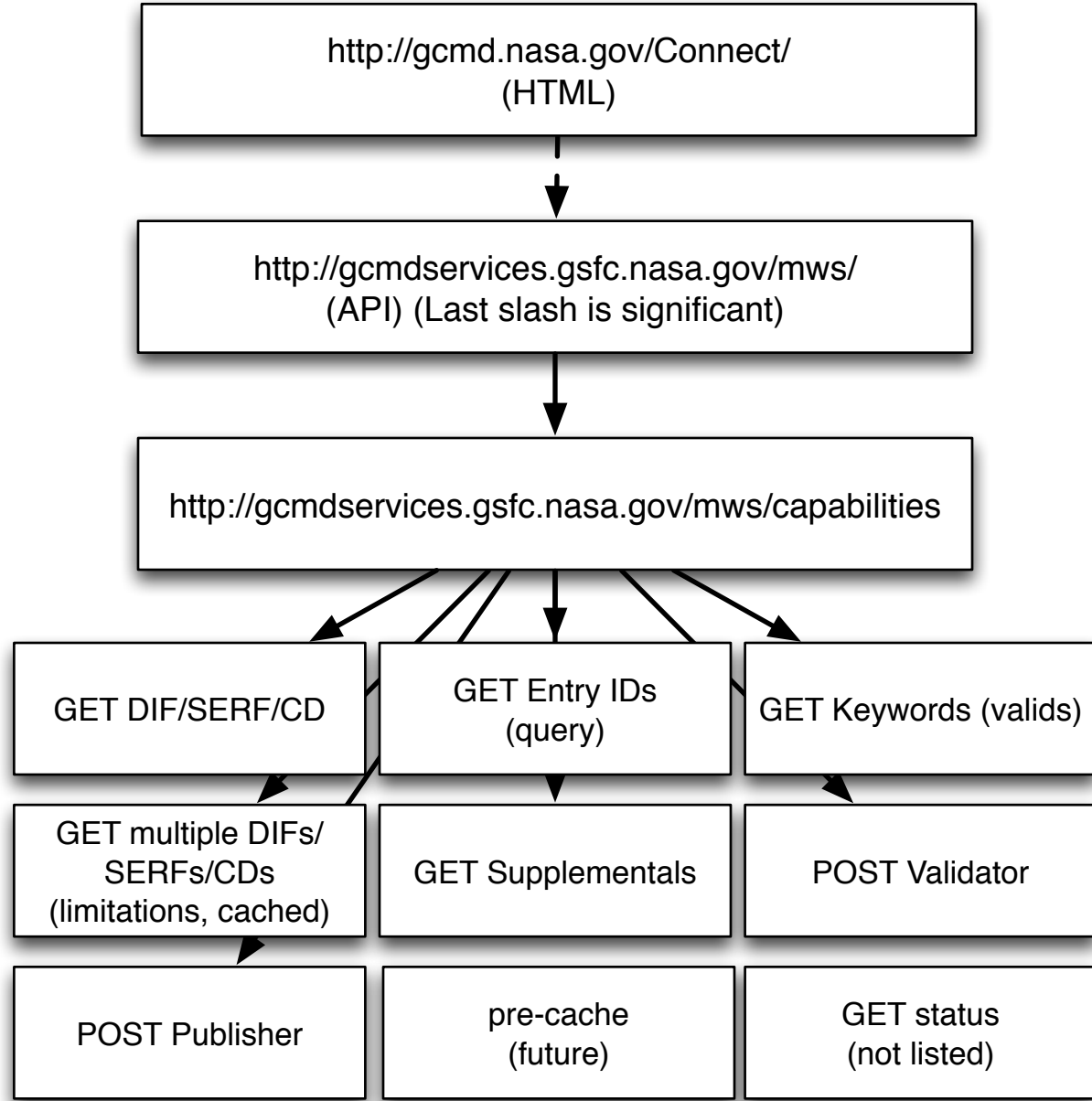
Keyword Management Service (KMS)
Metadata Web Service (MWS)

thomas.a.cherry@nasa.gov

11 slides



- Legacy Interfaces
 - Replaced OpenAPI
 - Should be binary compatible
 - OpenAPI around till summer 2013, let us know
- New Interfaces
- Internally Supports:
 - Document Builder
 - Bulk Uploader

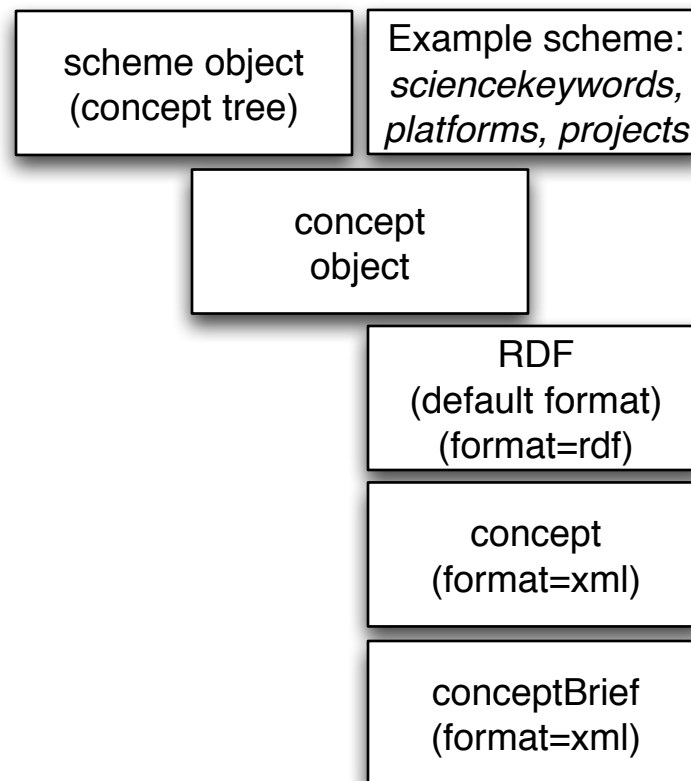


• cURL	<code>\$(curl -u demo:friend "http://gcmdservices.gsfc.nasa.gov/mws/")</code>
• Java	<code>http://gcmd.nasa.gov/Connect/clients/mws/SimpleJavaClient.java</code>
• Objective-c	command line app objective-c in xcode

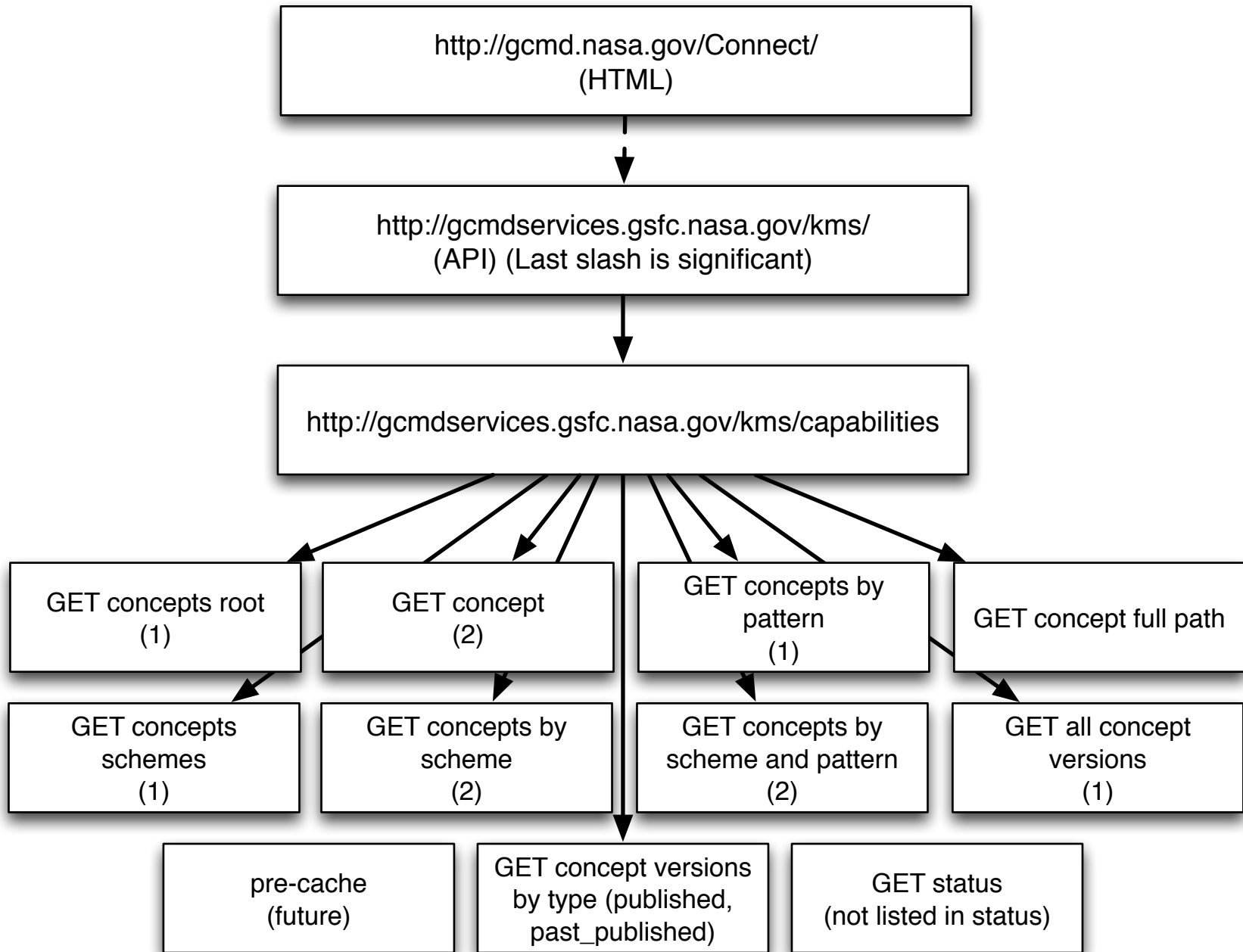
- All New Interfaces
- SKOS Data Model
- Internally Supports:
 - Keyword Manager
 - /static/ views

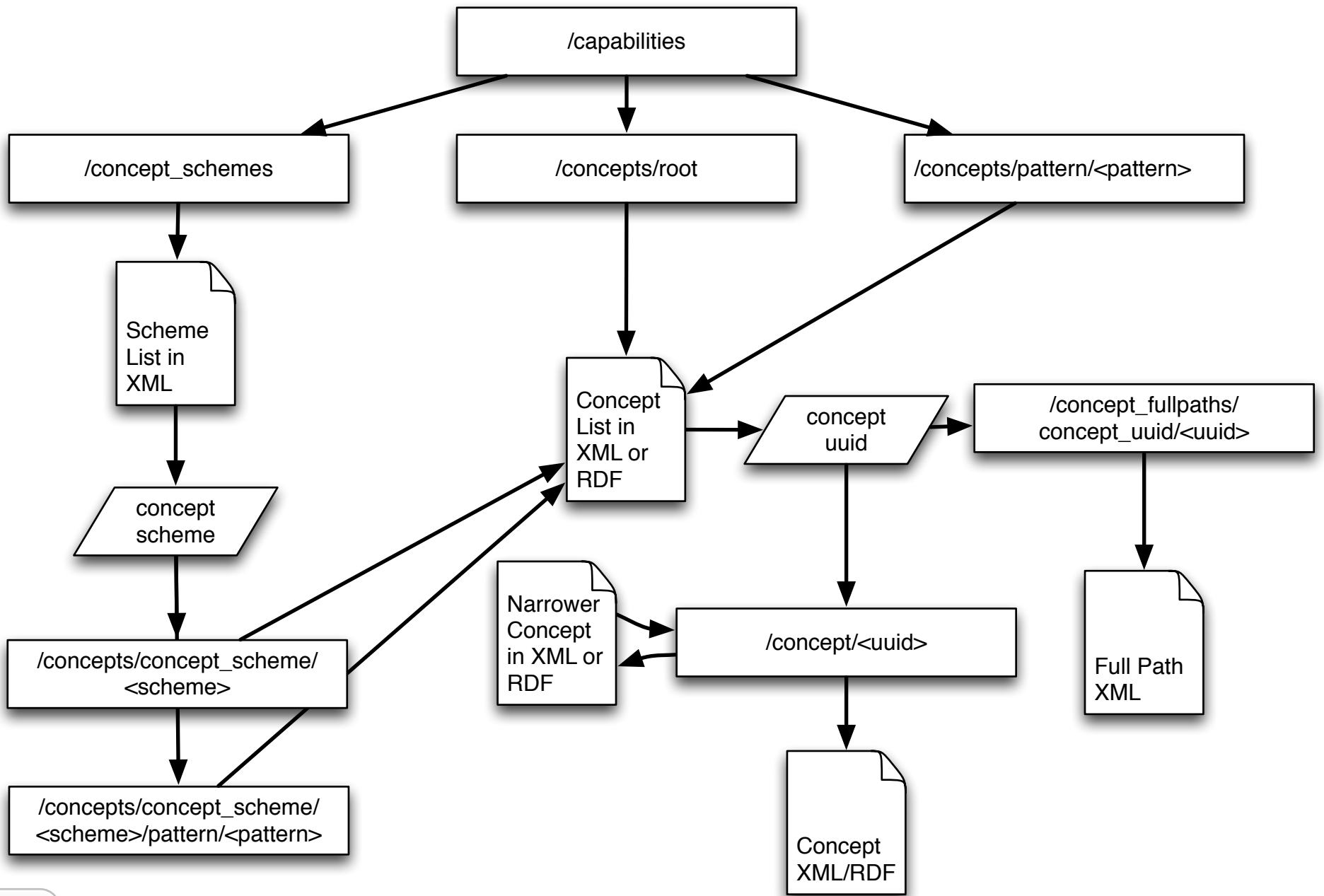
SKOS - Simple Knowledge Organization System (See W3C)

```
<rdf:RDF xmlns:rdf="http://www.w3.org/1999/02/22-rdf-syntax-ns#"
  xmlns:skos="http://www.w3.org/2004/02/skos/core#"
  xmlns:owl="http://www.w3.org/2002/07/owl#"
  xml:base="http://gcmdservices.gsfc.nasa.gov/kms/concept/">
```



- Only one broader relationship per concept, same scheme
- Multiple narrower relationships, same scheme
- Concepts have alt labels
- Related concept relationships which cross schemes (maybe, future)





show/hide

• cURL	<code>\$(curl -u demo:friend "http://gcmdservices.gsfc.nasa.gov/kms/")</code>
• Java	<code>http://gcmd.nasa.gov/Connect/clients/kms/SimpleJavaClient.java</code>
• Objective-c	app objective-c in xcode

gcmd-tech@lists.nasa.gov